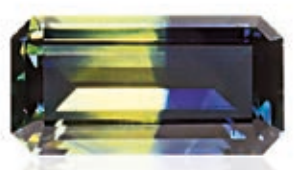


FREE

explore

# SAPPHIRE GEMFIELDS



CENTRAL QUEENSLAND



Welcome to the

# Sapphire Gemfields



The Sapphire Gemfields is an easy drive destination from major Queensland locations. Sapphire and Rubyvale are the main tourist and commercial areas of the Sapphire Gemfields.

The Sapphire Gemfields is an area of Central Queensland that contains over 900 square kilometres of Sapphire bearing ground. This is one of the largest Sapphire bearing areas of the world and takes in the townships of Anakie, Sapphire, Rubyvale and The Willows.

The crossroads to Sapphire and Rubyvale is half way between Rockhampton and Longreach and 42 kilometres west of Emerald on the Capricorn Hwy. The Sapphire Gemfields can also be accessed from the north via Capella and Clermont.



## LEGEND

Unsealed Road	-----
<b>STRATEGIC TOURING ROUTES</b>	
Australia's Country Way	—————
Capricorn Highway	—————
Great Inland Way	—————
Leichhardt Hwy & Newell Hwy	—————
Matilda Hwy & Kidman Way	—————
Overlander's Way	—————
Pacific Coast Touring Route	—————
Savannah Way	—————
Warrego Highway	—————



The thrill of finding a genuine sapphire is a lifelong memory... the Gemfields is an experience like no other.

## Gem Fever

A unique experience in the bush with the added excitement of wondering whether riches are just a stones throw away. As well as lots of colourful history, folklore, and geology to learn about, these are one of the only Sapphire Gemfields left in the world where anyone can come and dig for their own sapphires. Who knows you may stub your toe on a sapphire!

Exploring the Sapphire Gemfields may cover many activities. Fossicking, tours, underground mines or doing your own thing.

Gemshops, galleries, jewellers and cottage industries abound, where you can browse the hours away or purchase the gem of your dreams and a unique souvenir.

There are gems and jewellery to suit the thickness of all wallets and there is no better place to buy an Australian mined and cut sapphire and quality jewellery.

Admire the extensive wildlife (not just the locals). The abundance of historical and unusual dwellings created from billy boulders, timber, and corrugated iron, just like the original miners and pioneers, is definitely worth seeing. The area is renowned for its relaxed and friendly atmosphere.

Every form of accommodation is available on the Sapphire Gemfields ranging from four star to camping on the diggings. There are caravan parks in all the towns. Gaze at the nightly heavens from the Observatory.

Restaurants, cafes and hotels cater for an evening out in pleasant surroundings. Fuel, food and take away, maps and equipment hire are readily available in the towns, and the locals are only too willing to answer your queries or direct you to a favourite spot.

**So come and enjoy yourself and put some sparkle in your life...**

### The Centenary Sapphire

If 'Smiley' Nelson can do it, maybe you can too!

A 14 year old Serli ('Smiley') Nelson specked a massive 2,020 carat gem at Sapphire in 1979. The gem, named the Centenary Sapphire, was purchased by the Richardson Brothers of Sapphire.

The 'giant of gemstones' has a colourful history. In 1983 the stone was stolen from an exhibition in Sydney with other gems to the value of \$8,000,000 but surprisingly, the rough gem was recovered in 1986. It is the largest gem quality sapphire in the world.



# A little bit of History



Sapphires were first reported in the Sapphire Gemfields by John Archibald Richardson in the 1870's. By 1890 commercial mining had begun in Retreat Creek in the present town of Sapphire. It was incredibly hard work in an isolated spot in harsh conditions with a lack of water.

Mines were dug by hand using picks and shovels in open pits or trenches. The early miners also dug square sided shafts, which they climbed with their backs braced against the walls. In the earlier days the main buyers were

Germans, Russians and other European nationals.

After 1935 the Sapphire Fields went into a decline until the 1960's when a new phase began with tourists and recreational mining and fossicking becoming popular.

By 1970 an increasing price for rough sapphires led to large scale mechanized mining, which resulted in huge amounts of sapphires produced by a large number of miners, and purchased by buyers from Thailand. During this period Australia produced

over 80% of the world's sapphires.

High production continued until the early 1980's when an increase in production from Asia and Africa led to a massive downturn in the Australian Sapphire Market which continues today.

An active tourist industry was established in the early 80's and separate areas were set aside for fossicking, hand mining and large-scale machinery mining.

## ANAKIE GEMFIELDS CARAVAN PARK



### The Gem of the West

- Shady camping sites
- Powered & unpowered sites
- New Cabins
- Kiosk, gas
- Fossicking on site
- Pet friendly

7 Richardson St ANAKIE Q 4702  
P. 07 4985 4142  
E. rgrichardson@bigpond.com

23

## ARMFEST SAPPHIRE



### Learn from the friendly professionals

- Fossicking area
- Buckets of wash & gem bags
- Rough & cut sapphire directly from our commercial mining operations
- Open from 8am till 12 noon
- Take away bags of wash
- Come & see Carol & B.J.

Lot 128 Rubyhill Crescent SAPPHIRE Q 4702  
P. 07 4985 4290  
E. carolgraham3@bigpond.com

12

## COOLAMON MINING



### A rainbow of colour

- Clean, bright stones
- Excellent colour matching
- Mixed colour sets
- Star sapphires & fine blue 'cabs'
- Replacement stones cut to order
- Small orders welcome
- Friendly, personal service

P. 07 4985 4403 M. 0429 854 277  
E. gems@coolamonsapphires.com  
www.coolamonsapphires.com

## And Now —

Today the lifestyle of the Sapphire Fields is very laid back and peaceful, and has become a drawcard to many people with visitors always welcome.



Anakie township provides important services of police and a school and is situated next to the Capricorn Highway and railway station. No sapphires are found here but Anakie is known as the Gateway to the Sapphire Gemfields and is close to the Glenalva Fossicking Area. North of Anakie are the towns of Rubyvale and Sapphire. These two charismatic towns are the commercial centres of the Sapphire Gemfields and hold the richest deposits of sapphire in the area. A network of unsealed roads and bush tracks connect the various mining and fossicking locations with

names like Big Bessie, Poverty Hill, Graves Hill, Washpool, Reward and Goanna Flats to name a few.

Around Rubyvale and Sapphire there are many unusual and unlikely buildings which have become important tourist features. The houses and architecture are unique to this area where billy boulder and bush timber dwellings (just like the original pioneers), are not an uncommon sight.

Everything from a roman castle and a bottle house to bush humpies and

shacks. Many hours can be enjoyed just driving around and viewing these unique buildings and creations.

Willows Gemfields is a popular spot for fossicking, specking and a quiet bush life. Some of the world's most famous sapphires have been found here.

Many changes have come to pass in the Gemfields communities but the one thing that has stood firm is the locals' (called "Gemnies") warm hand of welcome extended to all visitors.

### MINERS HERITAGE WALK IN MINE



Australia's largest underground sapphire mine

#### OPEN 7 DAYS

April - September 9am - 5pm  
October - March 9am - 3pm

- Makers of fine jewellery
- Sapphire specialist
- Established 1984
- Guided underground mine tour
- Fossick for your own gems
- Covered picnic area

**Your one stop introduction  
to the Sapphire Fields**



97 Heritage Rd RUBYVALE Q 4702  
P. 07 4985 4444  
E. [admin@minersheritage.com.au](mailto:admin@minersheritage.com.au)  
[www.minersheritage.com.au](http://www.minersheritage.com.au)

31

# Sapphires

- Gem of the soul
- Precious
- Valuable



Sapphires are one of the most prized, precious and valuable gems in the world. Worn and treasured throughout history and today. They are known as the 'Gem of the soul'.

Sapphires are the birth stone of September and are the 45th Anniversary stone.

Along with its rarity and colour sapphires are very hard and second only to diamond, making the gem eminently suitable for Jewellery.

Sapphire is the name given to the coloured gem variety of the mineral corundum. In certain environments millions of years ago nature created these rare and coloured treasures for us to find.

## Sapphires are found in all colours.

On the Sapphire Gemfields the general colours are blue, green and yellow. Blue Sapphires are the most well-known colour, but it is the yellow sapphire, in particular the rich golden yellows that fetch the higher prices.

Multi coloured gems known as 'parti-coloured sapphires' are also found and highly valued. Another type of sapphire found here is called a 'star sapphire' and is generally bronze or black in colour and show a star like sheen in certain lights. A six sided crystal is

called a 'dogs tooth'. Rubies are very rarely found.

## Cutting

For most gem quality sapphires to achieve their maximum beauty and value, they are faceted into sparkling shapes. In the Sapphire Gemfields townships there are gem cutters able to cut gems for you with a quality far superior to commercial cut sapphires.

The Sapphire Gemfields has a magnificent Jewellery industry with fine jewellers offering creative styles and quality workmanship. Spend time to admire their work featuring natural sapphires right from the source.

These businesses are well worth visiting to learn and enjoy the sapphire and sapphire Jewellery industry.

## Treat yourself.

### OLD MICK'S GEM SHOP



#### Julie & Matthew will look after you

- Jewellery
- Faceted sapphires
- 9ct & 14ct gold settings
- Sterling silver settings
- Family owned for 25 years
- Centrally located in Rubyvale

PO Box 58, Keilambete Rd RUBYVALE Q 4702  
P. 0467 627 007  
E. oldmicks2@bigpond.com

47

### GEMSEEKERS CARAVAN PARK



#### The friendly place

- Self Contained units with A/C
- Powered sites
- Free Wi-Fi
- Bush setting, very quiet & tranquil
- Camp kitchen & Laundry
- Friendly owners
- Fire pit with wood

10 Vane Tempest Rd RUBYVALE Q 4702  
P. 07 4985 4175  
E. gilshnan8@bigpond.com  
www.gemseekers.com.au

36

### BOBBY DAZZLER SAPPHIRE MINE



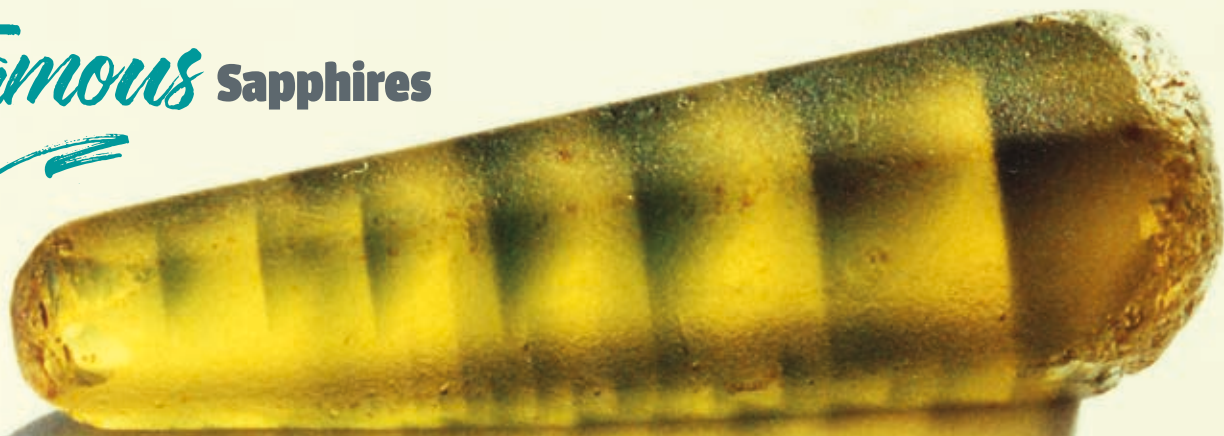
#### Great family days outing to remember

- Guided boot camp
- Fossicking trail, dig your own dirt
- Guided underground mine tour
- Guided fossicking park/take-away bags
- Gem shop
- Cafe/Take-away meals
- Pet friendly

Cnr Burridge & Rubyvale Rd RUBYVALE Q 4702  
P. 07 4981 0000  
E. infobobbydazzler@gmail.com  
www.bobbydazzlerminetours.com.au

46

# Famous Sapphires



Tomahawk Tiger (82.4cts), the finest multi-coloured sapphire crystal found. Still owned locally.

Many famous Sapphires have been found on these Sapphire Gemfields.

The "Pride of Queensland" is the largest cut yellow sapphire in the world at 169 carats and is owned by a private collector in the U.S.A.

A large Blue Black Sapphire known as the 'Black Star of Queensland' was recently offered for Sale for \$90 million. The gem was found in 1938 by 12-year-old Roy Spencer. The palm-sized stone weighed an incredible 1,156 carats and spent the next nine years languishing as a doorstep in the Spencer family home.

Equally well known are 4 very large and special sapphires carved as American Presidents heads and weighing more than 1700 carats each. These incredible gems are on display at the Oval Office at the White House in Washington DC, USA.

In the year 2000 a tourist found an impressive sapphire weighing 200 carats and named it 'The Millenium Sapphire'. The lady tourist describes the finding of the gem to the local newspaper and said "It was easy; it was just lying there!". The owner placed the Sapphire for tender at the annual Gemfest the following week where it was snapped up for \$85,000.

In stark contrast, is the story of the 'Autumn Glory' a magnificent Orange Sapphire found by a fossicker in 1993. He was offered \$30,000 the first day he found it, and within a short time the offers extended to \$100,000. But, the owner wanted more, and sent it off overseas where it was expected to fetch a much higher price.

Sadly the Sapphire "disappeared" and a fossickers dream of riches was lost.



The superb, but still missing, Autumn Glory Sapphire (30.25ctr).



Black Star of Queensland.

## RUBYVALE FRIENDLY GROCER



### Service with a smile

- Full range of Groceries
- Fuel, LPG, Ice
- Fossicking Gear for sale
- Newsagent
- Fresh fruit & vegetables

Don't Bring it with you! Get it right here...

Keilambete Rd RUBYVALE Q 4702  
Right next door to the hotel  
P. 07 4985 4190

41

## RUBYVALE GEM GALLERY



Sharing our sapphire story, The most outstanding collection of sapphires and designer jewellery

- Gem Gallery
- Café
- Holiday Apartments

Established 1988



Main St RUBYVALE Q 4702  
P. 07 4985 4388  
E. admin@rubyvalegemgallery.com

[www.rubyvalegemgallery.com](http://www.rubyvalegemgallery.com)

42



The area around Rubyvale and Sapphire is the 'heart and soul' of the Gemfields and defines the character and attitude of the gem miner...



# The *Miners Common*

## The 'heart and soul' of the Gemfields

The Miners Common is an 11,000 acre property that contains the towns of Rubyvale and Sapphire (6km apart) The two towns were settled due to the main sapphire diggings being along Retreat Ck at Sapphire town and Policemans Ck at Rubyvale.

The Miners Common is integral in the unique character of the Gemfields. The property was created in the 1890's and within the boundaries the miner was able to mine, build a dwelling and run a few livestock. The Miners Common is the last of such titles remaining in Queensland. Potential miners are still able to access these rules and build a dwelling but current law does not allow permanent dwellings on mining claims. This has given rise to the architecture and building "code" of the Fields.

Besides the homemade do-it-yourself dwellings unique to this area, animals roam freely on the common. Cattle, horses, camels, and goats feed throughout the area and it is not an unusual sight to spot cattle settled on the bitumen outside the Pub or wandering the streets. Kangaroos, wallabies and birdlife also cover the area due to the many dams and open cuts left from mining affording year round supplies of water.



## SAPPHIRE CARAVAN PARK



- Self contained & budget cabins
- Fully equipped camp kitchen & laundry
- BBQ huts/swimming pool
- Powered & unpowered sites
- Tranquil bush setting, gem washing area
- LP Gas refills/kiosk
- Daily wallaby & lorikeet feeding

[www.sapphirecaravanpark.com.au](http://www.sapphirecaravanpark.com.au)

57 Sunrise Rd SAPPHIRE Q 4702  
P. 07 4985 4281  
E. [sapphiregems@rocketmail.com](mailto:sapphiregems@rocketmail.com)

7

## PATS GEMS



### TOURIST FOSSICKING PARK

- Open 7 days a week!
- Buckets of wash for gem fossicking
- Quality discounted jewellery
- Lucky bags of wash
- Award winning gardens
- Pet & family friendly
- Bus drive tours of the gemfields
- Cabins & accommodation available
- **Scrub Blush Café & licensed bar**

**'There's no place like this place, so this must be the place'**



1056 Rubyvale Rd SAPPHIRE Q 4702  
P. 07 4985 4544  
E. [patsgems@bigpond.com](mailto:patsgems@bigpond.com)

3



# Attractions & Activities

**Gemfest** – Festival of Gems is the highlight of the Gemfields year. The whole of the Gemfields' shines and is held the 2nd week of August since 1988. All the Towns are involved with many local miners, jewellers, artists and gemcutters trading from stores in the grounds of the Allan King Memorial Park at Anakie.



**Underground Mine Tours** operate daily at Rubyvale. A must do giving an insight into the world of an underground gem miner.

**Gems Shops and Galleries** featuring Sapphires of all colours and sizes, investment stones to gift stones and specimens. Raw sapphires (rough), cut and stunning jewellery pieces.

**Jewellers and Gem Cutters** – Gem cutters for all your faceting and polishing needs, and Jewellers to set or remodel. Jewellery and gem cutting course available to the public during the year.

**Fossicking Parks** – Privately owned fossicking parks where you pay to sieve the gravels and keep what you find. Learn to flip a sieve and you're sure to find some sapphires and zircons - it's great fun and educational too!

**Cafés/Coffee shops/Hotels** – Relax and enjoy strudels, Devonshire teas, meals and takeaways in Rubyvale and Sapphire. Enjoy an ice cold beer and meal at Rubyvale, Sapphire and Anakie.

**Fossicking** – The Gemfields caters for all ages and determination. Take a Tag-a-long Fossicking Tour into the bush following in your vehicle with all gear supplied. Operated daily for that 'Out in the field's experience'.

**Observatory** – Dark sky viewing operates on many nights.

**Camping** is allowed in the Fossicking Areas. Permits available from various outlets on the Gemfields.

**The Locals** – Meet the friendly locals and characters called "Gemmies".

**Miners Historical Centre** – Remnant mining and mining displays. Folk festival held annually in June.

**4WD Driving Tracks** everywhere! Try a day out to Tomahawk Creek Fossicking area with 2,500 acres of 4wd tracks. Outback survival knowledge recommended.

**Bush Walking** – The Sapphire Wetlands is an area of 94.5 hectares situated behind the Kangoulu Park in Sapphire and is home to the endangered Fairy Shrimp.

**Specking** – The art of walking around, bent over, looking for Sapphires on the ground. Popular after the rain – 'The Emu Walk'.

**Exploring and Prospecting** – Large areas to explore and experience the different terrains.

**Mining** – Commercial mining is ongoing with underground and open cut. Viewing at some mines is possible.

**The Bush, Wildlife and Birds** – Enjoy the genuine bush lifestyle in an easy going, relaxed and safe area. Huge variety of birdlife, kangaroos and wallabies. Freedom and peace in the bush.

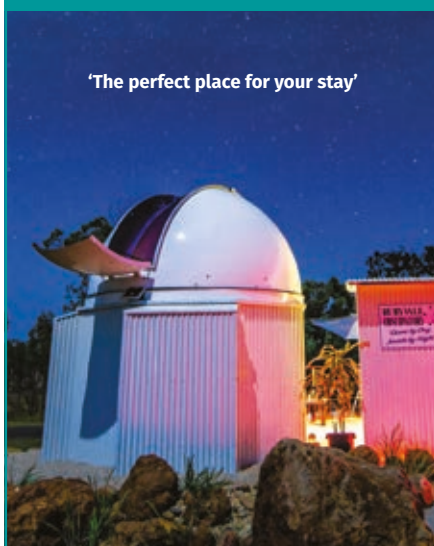
**Markets** are held on Sundays at Sapphire Football Grounds and at Rubyvale on Saturdays during the fossicking season.

## Gems & Jewellery

RUBYVALE MOTEL & HOLIDAY UNITS

and

TAYLORS FINE SAPPHIRES



MOTEL & SELF-CONTAINED UNITS  
The most comfortable, spacious & relaxing accommodation on the Gemfields

- Saltwater Pool, BBQ Hut, Free WiFi, Spa Units
- Landscaped Gardens, peaceful & private

RUBYVALE OBSERVATORY



35 Heritage Rd RUBYVALE Q 4702  
P. 07 4985 4518  
E. rubyvaleholiday@bigpond.com

32



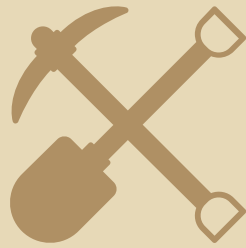
MICHAEL & JANE TAYLOR  
Visit their shop in Rubyvale

- Unique designs in Jewellery with Sapphires mined on the Gemfields
- Sapphire rough is selected for beauty & quality - faceted by Jane

www.rubyvaleholiday.com.au  
www.rubyvalesapphires.com.au

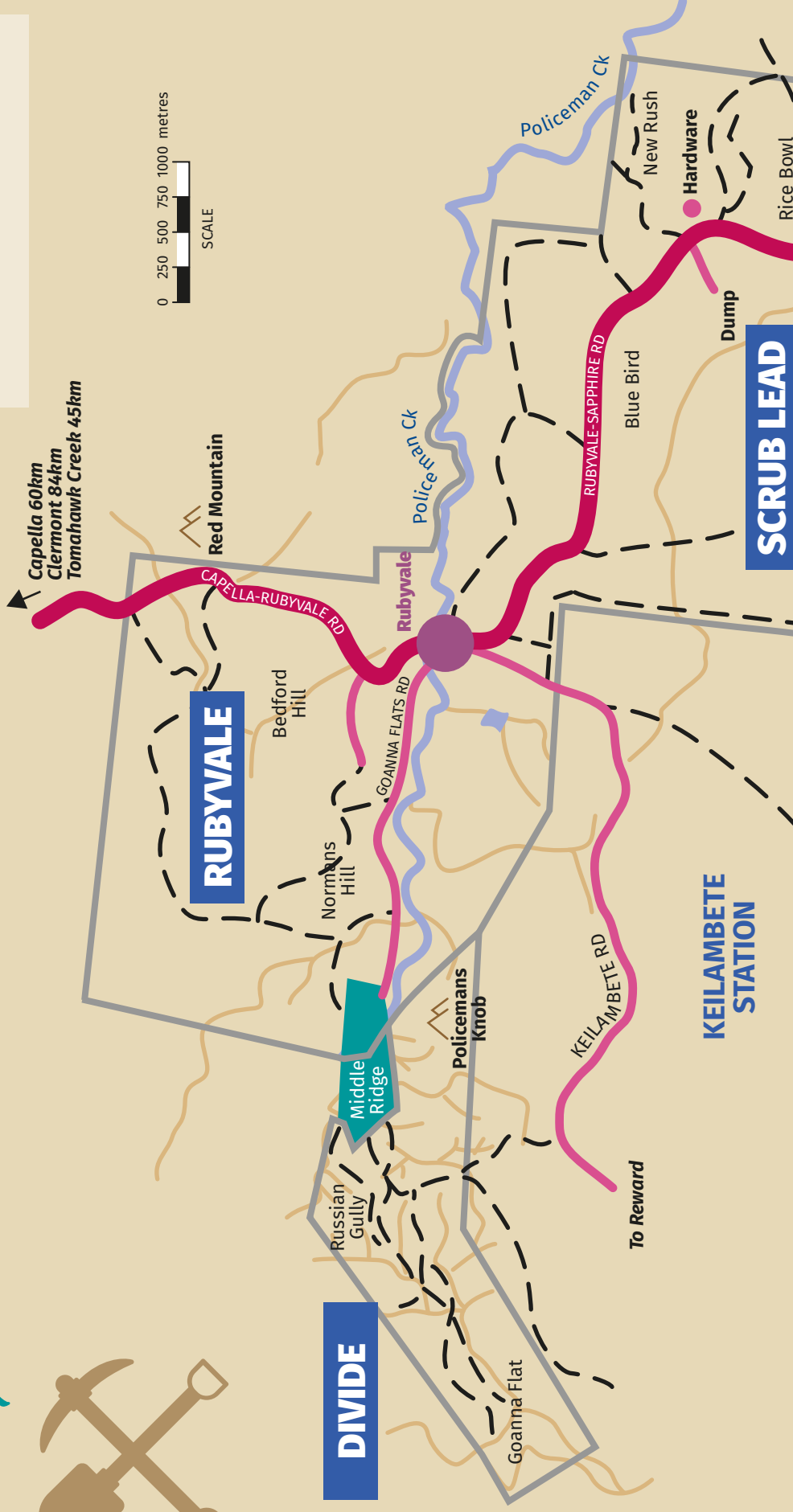
33

# Central Queensland Sapphire Gemfields



**Map Key**

	Main Road
	Secondary Road
	Track
	Creek
	Gully
	Fossicking Area
	Boundary





See Rubyvale, Sapphire & Anakie Town Maps on page 18-19.

# Fossicking

## Fossicking Tips

- Sapphires are heavy and are often on the bottom of the wash or around the bigger rocks.
- Ask other fossickers for advice, they are a friendly mob.
- Look for where someone else has dug and carry on. Fossickers have to leave sometime and they might have been an inch away from the big reward.
- Fossicking is a game of luck - enjoy the experience, enjoy the bush.

Five fossicking areas on the Central Queensland Sapphire Gemfields have been set aside for recreation and tourist fossicking.

Fossickers require a fossicking license in all areas. Your fossicking area allows you to search for and collect

fossicking materials using hand tools and for recreation, tourist and educational purposes only.

The licenses are inexpensive and the full rules and responsibilities are set out and include detailed maps and information.

Licenses and the rules are available online at DNR: [www.qld.gov.au/recreation/activities/fossicking](http://www.qld.gov.au/recreation/activities/fossicking)

Available everyday on the Sapphire Gemfields at the Blue Gem Caravan Park Sapphire.

# Fossicking



The Queensland Government has set aside large areas of sapphire bearing grounds for recreational fossicking with no mining allowed.

### **Willows Designated Fossicking Land (Willows)**

Willows is located about 38 km west of Anakie. Sapphires found here are mostly yellows and greens. The occurrence of gems is in shallow wash with the favourite spots reasonably close to town.

### **Big Bessie Fossicking Area (Sapphire)**

Big Bessie is a small area which lies within the Sapphire Designated Fossicking Land. Sapphire bearing

shallow wash covers most of the area and it has been extensively worked but there are still patches of undisturbed ground which is likely to contain sapphires.

### **Glenalva Fossicking Area (Anakie)**

Glenalva is about 20 km southwest of Anakie. A wide variety of coloured sapphires can be found in the shallow wash which covers most of this area.

### **Middle Ridge Fossicking Area (Rubyvale)**

Middle Ridge is a small fossicking area (32ha) located between the Designated Fossicking Lands of Divide and Rubyvale. Sapphire and zircon gems can be found in the mostly shallow wash of this area.

### **Tomahawk Creek Fossicking Area (Rubyvale)**

Although located on the Central Queensland Gemfields, Tomahawk Creek is more remotely located some 45km north-west of Rubyvale. Blue and "fancy" coloured sapphires have been found in the generally shallow wash which may be of many different types. The Tomahawk Tiger was found here.

### **Graves Hill Fossicking Area (Sapphire)**

Graves Hill is popular because of its proximity to Sapphire township and its shallow wash. All colours have been found here and is well worth a try.

**Stub your toe on a sapphire.**

## THE NEW ROYAL HOTEL RUBYVALE



### BEST BUSH PUB

- Lunch & Dinner Daily
- Pokies, Ubet & KENO
- Bottleshop & ATM
- Courtesy Coach

#### **Spacious log cabins set in native gardens**

- Air Conditioned, TV
- Log fires, Microwave

*Best Bush Pub 2014/15/16*

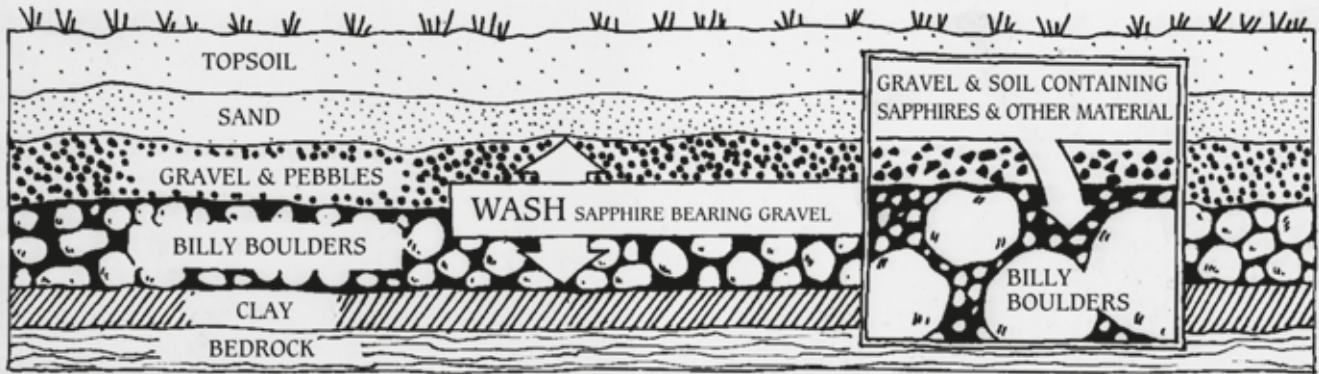
*Inducted into Qld Hotels Associations Hall of Fame 2017*

Cnr Goanna Flat Rd and Keilambete Rd  
RUBYVALE Q 4702  
P. 07 4985 4754  
E. [info@rubyvalehotel.com.au](mailto:info@rubyvalehotel.com.au)  
[www.rubyvalehotel.com.au](http://www.rubyvalehotel.com.au)

- Healthy, fun and rewarding
- Unique experience
- Rare opportunity



## HOW TO LOCATE SAPPHIRE BEARING GRAVEL WASH



# Gem Fever

Fossicking is offered in many ways. A fun and easy way is to set your sights on a Fossicking Park. Here miners have dug the dirt and you pay to sieve and keep any sapphires and zircons you find. Learn the art of 'flipping a sieve' and be shown how to recognize sapphires and zircons.

Another way is to take a tag-a-long fossicking tour which will take you out into the bush where you will do all the fossicking work to recover your gems.

They supply a guide and all the tools and equipment allowed to achieve your quest for glory.

For the more adventurous (and more than a day) you can do your own thing in the 5 fossicking areas. A fossicking license is required (obtained online and locally). The inexpensive license provides all the rules, responsibilities and maps.

There are not many places in the world where you can go, collect and keep one of the world's most precious gems. A world experience and opportunity awaits you.

**Good luck and happy digging.**

### You beauty!

Once you've opened up some 'ground' and dug some 'wash' you are ready to sieve. Sounds easy but there is some work involved. Fossickers open up a little spot and then spend a few hours 'digging' a day while enjoying the bush. 'Gem fever' may occur if you find something good.

But mostly you just dream of what might be in the next bucket and hope you find a beauty!

### RUBYVALE PROGRESS ASSOCIATION



GEMFEST SATURDAY NIGHT SPECTACULAR  
2nd Saturday of August each year, Rubyvale

- Sapphire / gem shops
- Cafés, Hotel, van parks & holiday accom
- Groceries & fuel
- Underground mine tours
- Fossicking tours & fossicking parks

Rubyvale, the heart of the gemfields

E. rubyvaleprogressassoc@outlook.com

### RUBYVALE CARAVAN PARK



#### Centrally located

- Powered & unpowered sites
- Self contained ensuite cabins
- Free Wi-Fi
- Swimming pool
- Laundry facilities
- Well equipped camp kitchen



16 Main St RUBYVALE Q 4702

P. 07 4985 4118

E. stay@rubyvalecaravanpark.com.au

www.rubyvalecaravanpark.com.au

38

### FASCINATION GEMS & CRYSTALS



#### Dave, Anne & Keith Bezett

- Join our tag-along fossicking tours for the ultimate gemfields experience
- Professional gem cutting
- Quality sapphires, settings & jewellery
- Hire equipment
- Gifts & souvenirs

72 Keilambete Rd RUBYVALE QLD 4702

P. 07 4985 4675

E. fascgems@bigpond.com

www.sapphire-talk.com

50

# Central Highlands



Central Highlands Regional Council welcomes you to our part of Queensland.

If you are travelling through the Central Highlands why not stop over and discover the hidden charms of the region.

We hope you find yourself some treasure at the Gemfields. Whether it's 'fossicking on the fields', sifting through a bag of wash, or just enjoying the winter sun, stay a little longer and

explore our unique environment.

Visit the Blackwater Japanese Gardens, created by artists as part of our Sister City relationship.

Catch yourself a red claw at the Bedford Weir and Fairbairn Dam, or enjoy the natural beauties of Carnarvon Gorge and the Blackdown Tablelands.

Don't forget to visit the 25m high Van Gogh Sunflower painting in Emerald along with a host of other public and Indigenous art.

Whether you come to stay or are just passing through, make sure to drop into our local Information Centres for all the local tips and travel advice (see *Directory*).

**Enjoy yourselves.**



[www.centralhighlands.com.au](http://www.centralhighlands.com.au)

## BLUE GEM TOURIST PARK



- Ensuite & economy cabins
- Powered sites in garden setting
- Fossicking licences & camping permits
- Convenience store
- Fuel, gas, ice
- Takeaway food
- Jewellery
- Fossicking park
- Railway carriage cabin

925 Anakie-Sapphire Rd SAPPHIRE Q 4702  
 PO Box 304 SAPPHIRE Q 4702  
 P. 07 4985 4162 F. 07 4985 4860  
[www.bluegemitouristpark.com.au](http://www.bluegemitouristpark.com.au)

16

## SKIPPY'S GEMS

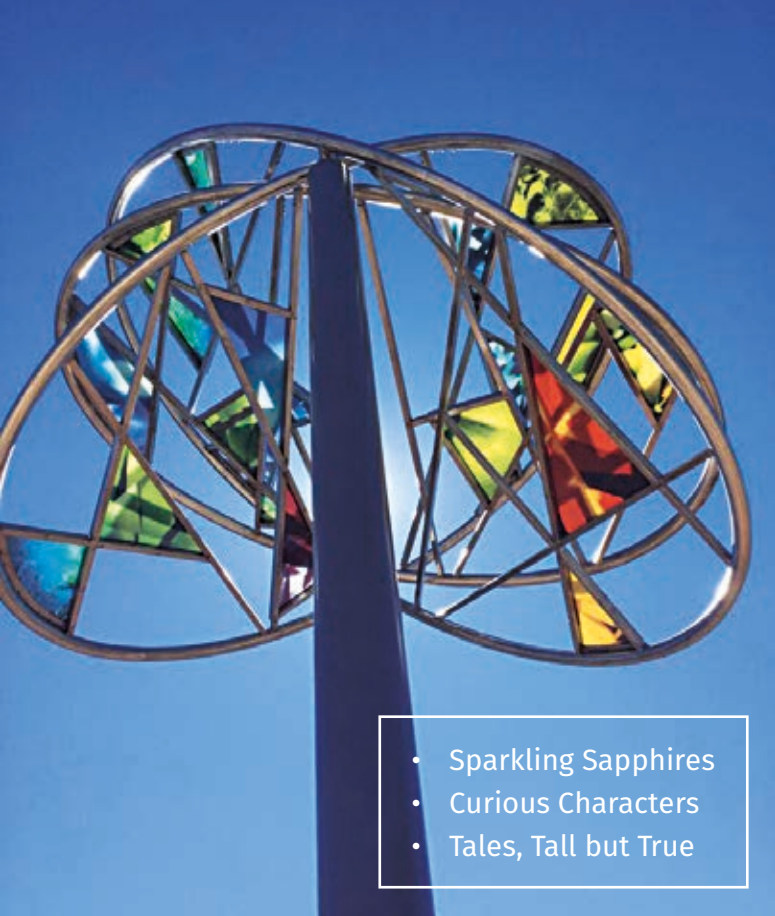


### The shop with the lot

- Lapidary, faceting & jewellery tools
- Chain maille & wire wrapping supplies
- Quality sapphires, settings & jewellery
- \*NEW\* Pulsator bucket wash & gem bags
- Open 7 days

1143 Rubyvale Rd SAPPHIRE Q 4702  
 P. 07 4985 4488 M. 0437 724 606  
 E. [skippysgems@bigpond.com](mailto:skippysgems@bigpond.com)  
[www.skippysgems.com.au](http://www.skippysgems.com.au)

1



- Sparkling Sapphires
- Curious Characters
- Tales, Tall but True

# Treasure Trail

Join this unique tourism trail. The trail takes you to a series of interpretative nodes, place markers and audio posts throughout the Sapphire Gemfields area. In each of the townships of Rubyvale, Sapphire, Anakie and Willows Gemfields you will find an interpretative node with a map highlighting the location of over 30 panels and markers. The trail tells a story of the characters, the capers, the history, and the boom and bust nature of the Gemstone industry. You can engage with technology through the augmented reality features and hunt for hidden geo caches. Grasp this opportunity to obtain a fossicking license to dig in the designated areas.

The treasure trail also takes you to the Sapphire Gemfields Wetland Reserve. The 94 hectare freshwater wetland has incorporated walking and cycling tracks, seating, a restored historic fossickers home, a board walk and bird watching hide as well as providing educational and directional signage and viewing areas.

The towering signature art piece of the interpretative trail is named Sapphire Reflections and is symbolic of the colourful gemstones. The trail is part of the Dig the Tropic geo-tourism adventure.



## Gemfest: Festival of Gems

**Gemfest** – Festival of Gems, is an annual four day celebration of Sapphires and the Sapphire Industry of Central Queensland.

Starting in 1988 to help celebrate Australia's bi-centenary, the event was a great success and \$7000 was donated to the Royal Flying Doctor Service. Since 1991, money is invested towards the promotion of the Central Queensland Sapphire Gemfields and local causes.

Gemfest is held on the second weekend of August annually.

See [www.gemfest.com.au](http://www.gemfest.com.au) for more information.

## M & M SAPPHIRES



- Exquisite Sapphire jewellery
- Cut & rough gems
- Jewellery findings manufactured onsite
- We can set your stones or choose from our wide range of precious or semi-precious gems & jewellery
- Faceting supplies, jewellery tools & mineral specimens

1077 Rubyvale Rd SAPPHIRE Q 4702  
 P. 07 4985 4437  
 E. [info@ozsapphires.com.au](mailto:info@ozsapphires.com.au)  
[www.ozsapphires.com.au](http://www.ozsapphires.com.au)

2

## SAPPHIRE SHOWCASE



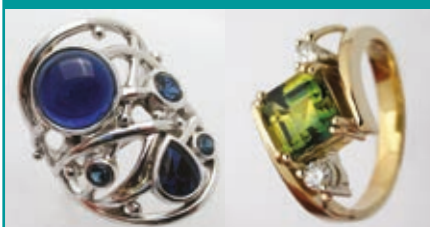
**Because you are special at Sapphire Showcase**

- Complete range of gems, jewellery & settings at very competitive prices
- Huge range of Sapphires & Zircons
- Exclusive ring designs
- Handmade engagement & wedding rings
- Customised handmade jewellery

1052 Rubyvale Rd SAPPHIRE Q 4702  
 P. 07 4981 0301 M. 0417 603 970  
 E. [jim.nesbitt@live.com](mailto:jim.nesbitt@live.com)  
[www.sapphireshowcase.com.au](http://www.sapphireshowcase.com.au)

4

## McARTHUR'S JEWELLERS



**Only our customers get as much attention as our jewellery**

- Trades qualified Jeweller
- 35 years' experience in design & manufacturing
- Quality jewellery all handcrafted & designed at our store
- Buy online

Rockhound Rd SAPPHIRE Q 4702  
 P. 07 4985 4654  
 E. [mcarthurs10@bigpond.com](mailto:mcarthurs10@bigpond.com)  
[www.mcarthursjewellers.com.au](http://www.mcarthursjewellers.com.au)

17

# Directory

## Accommodation

### The New Royal Hotel & Cabins

Log cabins with AC & open fire, meals 7 days, beer garden, TAB, KENO, ATM, pokies.  
P. 07 4985 4754 A. Keilambete Rd RUBYVALE  
E. info@rubyvalehotel.com.au

### Rubyvale Gem Gallery

Holiday apartments, centre of town, luxurious, veranda & garden settings.  
P. 07 4985 4388 W. www.rubyvalegemgallery.com

### Rubyvale Miners Cottage

Self-Contained Cabins.  
P. 07 4985 4531 A. 65 Goanna Flats Rd RUBYVALE

### Rubyvale Motel & Holiday Units

Superb 4 Star accommodation, pool, spa units, quiet oasis, Landscaped gardens.  
P. 07 4985 4518 A. 35 Heritage Rd RUBYVALE  
W. www.rubyvaleholiday.com.au

### Ramboda Homestead, Anakie

B & B, self contained cabins.  
P. 07 4985 4154 E. ramboda@activ8.net.au

## Attractions

### Gemfields Markets

Sapphire Football Grounds, Every Sunday from 7am, April – Sept.  
P. 0400 914 550

### Miners Common Museum

Museum & events.  
P. 0407 760 001 A. 1621 Rubyvale Rd RUBYVALE  
E. history@sapphiregemfields.com.au

### Miners Heritage Walk-in Mine

Australia's largest underground sapphire mine tour.  
P. 07 4985 4444 A. 97 Heritage Rd RUBYVALE  
W. www.minersheritage.com.au

### Rubyvale Observatory

Bookings essential at Rubyvale Motel & Holiday Units.  
P. 07 4985 4518 A. 35 Heritage Rd RUBYVALE

### Saturday Markets

8am-1pm, April to October  
P. 0428 399 591 A. Rubyvale Flats

### Sunday Markets

Sapphire Football Grounds, from 7am.

### Shona's Watercolours

P. 0421 783 621

## Caravan Parks

### Anakie Gemfields Caravan Park

Powered & unpowered sites, new cabins, kiosk, fossicking, pet friendly, gas.  
P. 07 4985 4142 A. 7 Richardson St ANAKIE

### Blue Gem Tourist Park

Powered sites, cabins, shop, food, fuel, gas, fossicking, laundry.  
P. 07 4985 4162 W. www.bluegemitouristpark.com

### Gem Air Caravan Park

Campground & Cabins, powered & unpowered sites.  
P. 07 4985 5124 A. Willows Gemfields  
E. gemair@bigpond.com

### Gemseekers Caravan Park & Units, Rubyvale

S/C units with ensuite, private powered sites.  
P. 07 49854 175 E: gilshnan8@bigpond.com  
W. www.gemseekers.com.au

### Rubyvale Caravan Park

Caravan sites, cabins, pool, laundry, fully equipped camp kitchen, free WiFi.  
P. 07 4985 4118 A. 16 Main St RUBYVALE  
W. www.rubyvalecaravanpark.com.au

### Sapphire Caravan Park

Kui Parks membership discount.  
P. 07 4985 4281 A. 57 Sunrise Rd SAPPHIRE  
E. sapphiregems@rocketmail.com

### Willows Caravan Park

S/C units with ensuite, private powered sites.  
P. 07 4985 5128 A. Willows Gemfields

## Community

### Anakie State School

P. 07 4981 1111 A. Cook St ANAKIE  
E. admin@anakieess.eq.edu.au

### Church Services

Anglican, 3rd Sunday  
Catholic, 2nd & 4th Sunday  
Ecumenical, 5th Sunday  
Salvation Army, 2nd & 5th Sunday

### Gemfields Community Support Assn. Inc.

Domestic assistance, social support, respite care, meals on wheels & centre based care.  
P. 07 4985 4664 A. PO Box 391 SAPPHIRE  
E. admin@gemfields.org.au F. 07 4985 4606

### Gemfields Junior Rugby League

P. 07 4985 4282

### Gemfields Lapidary & Craft Club Inc.

Open Wed & Sat.  
P. 0456 037 117 A. Roy Day Park, SAPPHIRE  
E. gemfieldslapidary@hotmail.com

### Gemfields Library

Open Tues 10am -2pm, Thurs 12 noon – 4pm & Sat 9am – 12pm.  
P. 07 4981 0299 A. Rubyvale Hall RUBYVALE

### Gemfields Medical Centre

Gemfields Outpatients Clinic  
P. 07 4985 4547 F: 07 4985 4693  
A. 984 Rubyvale Rd SAPPHIRE

### Gemfields Playgroup

P. 0459 343 174 A. Flagon Alley Rd SAPPHIRE  
E: c\_mccandless@live.com.au

### Gemmy Quilters

P. 07 4985 4343 A. Sapphire Hall SAPPHIRE

### Gemfields Riding for the Disabled

P. 0408 798 440 A. Roy Day Park SAPPHIRE  
E: sapphire.rda@gmail.com

### Opportunity Shop

P. 07 4985 4690  
A. Salvation Army, Angelo's SAPPHIRE

### Retreat Creek Campdraft Assoc

P. 0429 177 452  
E: rcca\_secretary@outlook.com

### RSL Gemfields Inc.

P. 07 4985 4588  
A: 3 Clinic Rd SAPPHIRE, Behind Post Office  
E: secretary@gemfieldsrsl.com.au

### Rubyvale Post Office

P. 07 4985 4130 A. Main St RUBYVALE

### Rubyvale Progress Assoc

P. 0429 860 180  
E: rubyvaleprogressassoc@outlook.com

### Sapphire Post Office

P/F. 07 4985 4140  
A. 988 Rubyvale Rd SAPPHIRE

### Transfer/Refuse Station

The Tip, Rubyvale & Sapphire  
Sat: 8am - 12pm, Sun: 8am - 4pm,  
Mon: Closed, Tues: 7am - 9am,  
Wed/Thurs: 4pm - 6pm, Fri: 7am - 9am

## Convenience Stores

### Rubyvale Friendly Grocer

Full range of groceries, friendly, helpful service, next door to the Hotel.  
P/F. 07 4985 4190  
A. Keilambete Rd RUBYVALE

### Sapphire Trading Post

'Top Shop', groceries, gifts, souvenirs, newsagent, hardware, camping & mining equipment & much more.  
P: 07 4985 4179 A. Centenary Drv SAPPHIRE

## Chemist

### Gemfields Pharmacy

Mon - Fri, 9am - 4.30pm  
P. 07 4981 4863 A. 998 Rubyvale Rd SAPPHIRE

## Eateries/Takeaways

### Blue Gem Tourist Park, Sapphire

7am to 7pm, 7 Days a week  
P. 07 4985 4162

### Bobby Dazzler Café

Café/ take - away meals.  
P. 07 4981 0000  
A. Cnr. Burridge & Rubyvale Rd RUBYVALE

### Muggachinno's

Homemade strudel, Merlo coffee, open 7 days April to October.  
P. 07 4985 4025 A. 24 Keilambete Rd RUBYVALE  
E. gunterkuenz@bigpond.com

## Visitor Information Centres

### Emerald

Central Highlands  
Visitor Centre (VIC)  
Clermont St  
EMERALD Q 4720  
P. 07 4982 4142

### Springsure

The Wool Shed  
Information Centre  
Gregory Hwy  
SPRINGSURE Q 4722  
P. 07 4984 1961

### Blackwater

Blackwater International  
Coal Centre  
Capricorn Hwy  
BLACKWATER Q 4717  
P. 07 4892 7755

### Capella

Capella Agencies  
Peak Downs St  
CAPELLA Q 4723  
P. 07 4984 9457

### Duaringa

Duaringa Historical &  
Information Centre  
Mackenzie Park  
DUARINGA Q 4712  
P. 07 4935 7077



### The New Royal Hotel

Lunch & dinner 7 days, takeaways.  
P. 07 4985 4754 A. Keilambete Rd RUBYVALE  
E. info@rubyvalehotel.com.au

### Rubyvale Café

Great food- takeaway, weekend buffet  
breakfast.  
P. 07 4985 4180 A. 3 Main St RUBYVALE

### Sapphire Trading Post

'Top Shop', homemade pies & takeaway food.  
P: 07 4985 4179 A. Centenary Drv SAPPHIRE

### Scrub Blush Licensed Café/Restaurant

Open 7 days a week from 8am.  
P. 07 4985 4544 A. Pat's Gems SAPPHIRE  
E: patsgems@bigpond.com

## Fossicking

### Armfest Pty Ltd

8am – 12 noon. P. 07 4985 4290  
A. Lot 128 Rubyhill Cres SAPPHIRE  
E. carolgraham3@bigpond.com

### Bobby Dazzler Sapphire Mine

Fossicking park and gem shop, cafe,  
guided underground mine tour.  
P. 07 4981 0000  
A. Cnr. Burrigde & Rubyvale Rd RUBYVALE  
W. www.bobbydazzlerminetours.com.au

### Fascination Gems & Crystals

Self-drive fossicking tours, gemcutting.  
P. 07 4985 4675 W. www.sapphire-talk.com

### Miners Heritage Walk-in Mine

Australia's largest underground sapphire  
mine tour, fossicking.  
P. 07 4985 4444 A. 97 Heritage Rd RUBYVALE

### Lady Luck Fossicking Tours

Fun for all Ages. f ladyluckfossickingtours  
P. 0474 974 324

### Pats Gems

Buckets of sapphire bearing wash, lucky  
bags, family & pet friendly, cafe.  
P. 07 4985 4544 E. patsgems@bigpond.com

### Rubyvale Miners Cottage

Come & have fun with us fossicking.  
We guide you all the way. Mon to Thurs,  
9am-2pm, May- Sept.  
P. 07 4985 4531 A. 65 Goanna Flats Rd RUBYVALE

## Gems, Jewellery & Sapphires

### An Extra Facet

Quality local sapphires, gold & silver jewellery.  
P. 0408 271 905 A. Main St RUBYVALE  
E. anextrafacet@bigpond.com

### Ashe Jewellery

Jewellery designed & custom made by  
Bevin, qualified tradesman jeweller.  
P. 07 4985 4478 A. PO Box 36 RUBYVALE  
E. becashe55@gmail.com

### Bradford's Place

Gemcutting, gems & jewellery. 200m down  
from the pub.  
P. 0400 320 970 A. 5 Farm Rd RUBYVALE

### Coolamon Mining

High quality local stones cut & rough.  
P. 07 4985 4403 or 0429 854 277  
E. gems@coolamonsapphires.com  
W. www.coolamonsapphires.com

### Fascination Gems & Crystals

Gems & jewellery, gold & silver settings.  
P. 07 4985 4675  
A. 72 Keilambete Rd RUBYVALE  
W. www.sapphire-talk.com

### GemVal

Gemstone & jewellery valuations.  
By appointment only.  
P. 0413 452 540 E. gemval1@gmail.com

### M & M Sapphires

Manufacturing jewellery, top quality sapphires,  
faceting & jewellery tools & souvenirs.  
P. 07 4985 4437 or 0433 347 317  
A. 1077 Rubyvale Rd SAPPHIRE  
W. www.ozsapphires.com.au

### McArthurs Jewellers

Trades qualified jeweller, over 30 years  
experience, exclusive jewellery. BUY ONLINE.  
Etsy: mcarthursjewellers  
P. 07 4985 4654  
W. www.mcarthursjewellers.com.au

### Miners Heritage Walk-In Mine

The finest collections of sapphire jewellery.  
P. 07 4985 4444  
A. 97 Heritage Rd, RUBYVALE  
W. www.minersheritage.com.au

### Old Mick's Gemshop

Sapphire jewellery, sapphires, settings.  
P. 0467 627 007 A. Keilambete Rd RUBYVALE  
E. oldmicks2@bigpond.com

### Pats Gems

Gems, jewellery, rocks, minerals, fossils,  
souvenirs.  
P. 07 4985 4544 E. patsgems@bigpond.com

### Richardson Sapphires

Miner & sapphire merchant.  
P. 07 4985 4256  
E. rgrichardson@bigpond.com

### Rubyvale Gem Gallery

Tourism Awards Winner. Most outstanding  
collection of sapphires & designer jewellery.  
P. 07 4985 4388 A. Main St RUBYVALE  
W. www.rubyvalegemgallery.com

### Sapphire Showcase

Handcrafted jewellery, local, sapphires, all  
custom made. Unset sapphires.  
P. 49810 301 or 0417 603 970  
A. 1052 Rubyvale Rd SAPPHIRE  
W. www.sapphireshowcase.com.au

### Skippys Gems

Gems & jewellery, pulsator bucket wash.  
P. 07 4985 4488 A. Rubyvale Rd SAPPHIRE  
W. www.skippysgems.com.au

### Taylor's Fine Sapphires

Locally mined & cut sapphires & fine  
jewellery. Shop online.  
P. 07 4985 4518 A. 35 Heritage Rd RUBYVALE  
W. www.rubyvalesapphires.com.au

## Hotels

### The New Royal Hotel & Cabins

Log cabins with AC & open fire, meals 7 days,  
beer garden, TAB, KENO, ATM, pokies.  
P. 07 4985 4754 A. Keilambete Rd RUBYVALE  
E. info@rubyvalehotel.com.au

### Anakie Gemfields Hotel Motel

ATM, KENO, lawn bowls green, lunch & dinner.  
f Anakie Gemfields Hotel  
P. 07 49854 100 A. 3 Richardson St ANAKIE

## Motels

### Rubyvale Motel & Holiday Units

4 Star, relaxing, private & peaceful motel & self  
contained units, pool, BBQ.  
P. 07 4985 4518 A. Heritage Rd RUBYVALE  
W. www.rubyvaleholiday.com.au

## Lapidary Supplies

### Horst Ricker Engineering

Faceting supplies & equipment.  
P. 0417 854 104 A. 21 Sandys Track RUBYVALE

### Rubyvale Cut and Slice

Lapidary & jewellery tools.  
P. 07 4985 4003 A: 25 Keilambete Rd RUBYVALE  
E: info@cutandslice.com.au  
W. www.cutandslice.com.au

### Skippy's Gems

Lapidary, craft & jewellery tools, craft  
supplies & equipment, cut & rough sapphire.  
P. 07 4985 4488 or 0437 724 606  
A. Rubyvale Rd SAPPHIRE  
W. www.skippysgems.com.au

## Trades & Services

### Ellen's Hairdressing

Quality haircuts, appointments only, all  
hairdressing available.  
P. 0428 603 333

### Gemfields Building Supplies

"The Tin Shed", all your hardware needs.  
P. 07 4985 4484  
A. 1280 Rubyvale Rd RUBYVALE

### Gemfields Bobcat & Tipper Hire

Rubyvale.  
P. 0429 803 381

### Gemfields Electrical

All electrical work, aircon installations.  
P. 0419 252 036

### Gemfields Mowing Services

Mowing, trimming, waste removal.  
Servicing the Gemfields region.  
P. 0404 162 204

### Permakil Pest Control

All your pest control needs. QBCC:1186433.  
P. 0457 355 020 E. michael@permakil.com.au

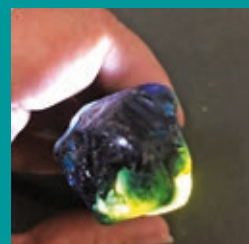
### Water Cartage & Poly Tank Repairs

P. 0429 775 068

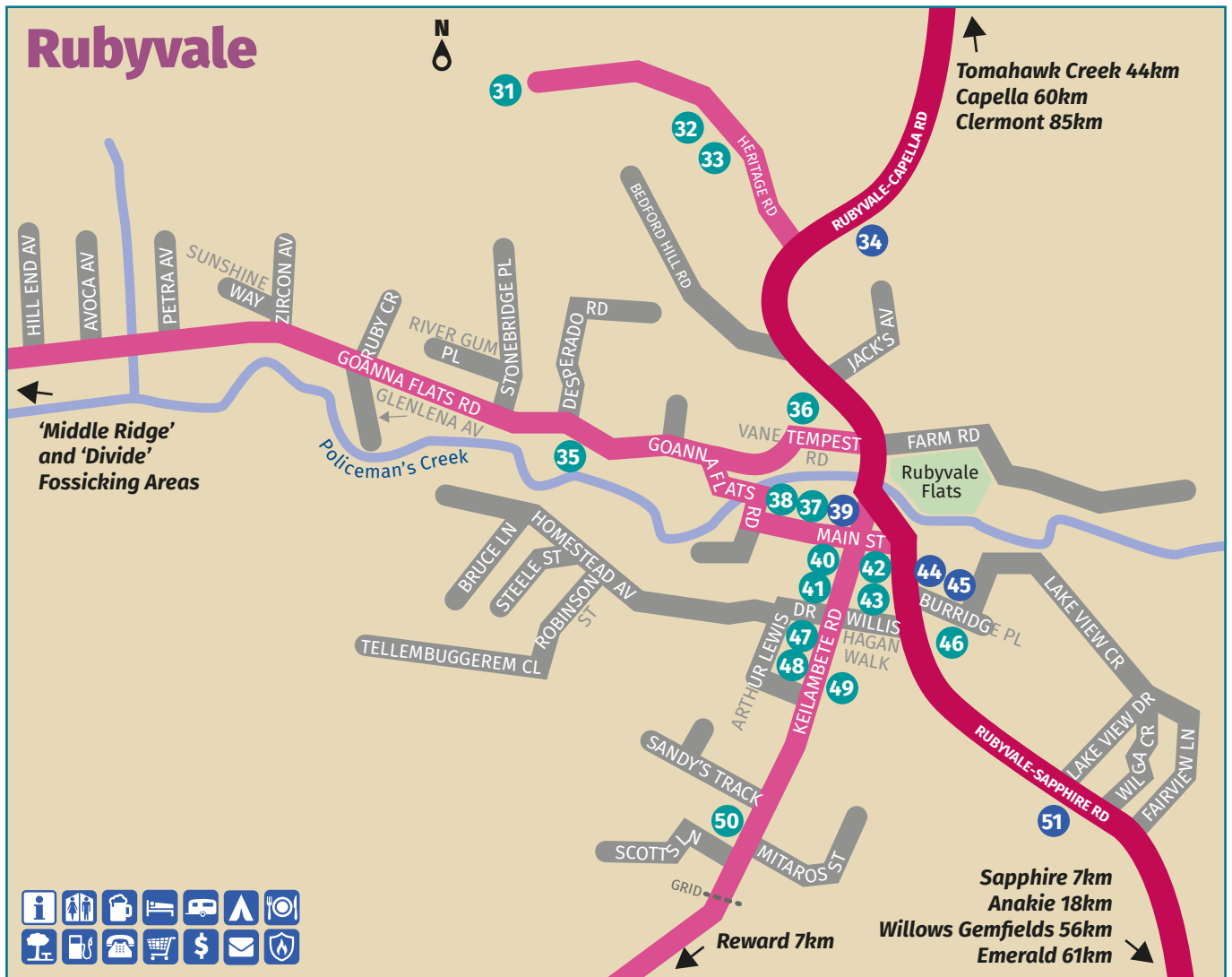
## Recent Finds

In March 2018 a man out walking after heavy rain  
found a 141 carat sapphire just sitting on the  
surface. It is valued at more than \$30,000. (Pictured)

In mid-2017 a fossicker found a green sapphire at  
Tomahawk Creek which sold to a gem merchant for  
\$45,000!







## Rubyvale Places of Interest

- |  |                                    |                                       |
|--|------------------------------------|---------------------------------------|
| <b>31</b> Miners Heritage Walk in Mine   | <b>38</b> Rubyvale Caravan Park    | <b>45</b> Hall & Library              |
| <b>32</b> Rubyvale Motel & Holiday Units | <b>39</b> Rubyvale Post Office     | <b>46</b> Bobby Dazzler Mine          |
| <b>33</b> Taylors Fine Sapphires         | <b>40</b> The New Royal Hotel      | <b>47</b> Old Micks Gemshop           |
| <b>34</b> Rubyvale Cemetery              | <b>41</b> Rubyvale Friendly Grocer | <b>48</b> Muggachino's Coffee Shop    |
| <b>35</b> Miners Cottage                 | <b>42</b> Rubyvale Gem Gallery     | <b>49</b> Rubyvale Cut and Slice      |
| <b>36</b> Gemseekers Caravan Park        | <b>43</b> Main St Café             | <b>50</b> Fascination Gems & Crystals |
| <b>37</b> An Extra Facet                 | <b>44</b> <b>Public Toilets</b>    | <b>51</b> Miners Historical Centre    |

## Town Legend

- |              |  |                  |                                    |   |
|--------------|--|------------------|------------------------------------|---|
| Information  | Public Toilets   | Outback Pub      | Motel                              | Post Office                             |
| Food/Meals   | Picnic Area  | Public Telephone | Basic Grocery Items                | Fuel Stop (Willow Gemfields - ULP ONLY) |
| Caravan Park | Camping (No camping in 1.5km of Rubyvale or Sapphire Post Offices) | Transfer Station | Caravan/Motorhome Waste Dump Point | Place of Interest                       |
| ATM Facility | Police Station   | Fire Brigade     | Ambulance/Medical Centre           |   |



# Gemfest

Anakie Central Queensland  
*Festival of Gems*  
Assoc Inc

**8th - 11th August 2019**  
**6th - 9th August 2020**  
**12th - 15th August 2021**



**44 kilometres  
west of  
Emerald!**

**Local,  
National and  
International  
exhibitors**

**Activities and  
Entertainment  
Fabulous Prizes  
to be won**

**Gems,  
Jewellery,  
Crystals  
and lots  
more!**

**Alan King Memorial Park - Anakie - The Gemfields QLD**

